



Comments

**Subscribe**  
Starting at 99 cents

**Members**  
**Sign In**

**Breaking:** 'Severe thunderstorm' warning issued for Bristol County

WOMEN & POWER MAGAZINE

# The 2016 top 100 women-led businesses in Massachusetts

The Globe Magazine and the Commonwealth Institute partner to name the most noteworthy companies and nonprofits helmed by women.

5

| OCTOBER 28, 2016

## HOW WE CREATED THIS YEAR'S LIST

We looked at revenue or operating budget and other variables, including number of full-time employees in the state, workplace and management diversity, and innovative projects. We then ranked organizations according to our own formula. We considered both for-profit and nonprofit organizations. This is the 15th year that the Commonwealth Institute — a local nonprofit that supports female business leaders — has created the list, and the fourth year that the Globe Magazine has partnered with the group.

*Note: Leaders in this list were in place at the end of 2015 (the year for which we examined revenue and other data) and a few are no longer at the businesses.*

In addition to the list, [read interviews with seven of the business leaders](#), plus [sizing up a few of the organizations](#).

| <b>RANK</b> | <b>COMPANY</b>  | <b>LEADER</b>                                 | <b>LOCATION</b>       | <b>INDUSTRY</b>         |
|-------------|---|---|-----------------------|-------------------------|
| 1           | Brigham and Women's Health Care   | Elizabeth G. Nabel, president                 | Boston                | Health care             |
| 2           | Boston Medical Center HealthNet Plan                                    | Susan Coakley, president                      | Boston                | Health care             |
| 3           | Houghton Mifflin Harcourt   | Linda K. Zecher, president, CEO, and director | Boston                | Education/media         |
| 4           | Boston Medical Center   | Kathleen E. Walsh, CEO and president          | Boston                | Health care             |
| 5           | Boston Children's Hospital  | Sandra L. Fenwick, president and CEO          | Boston                | Health care             |
| 6           | TJX Cos.  | Carol Meyrowitz, chairman and CEO             | Framingham            | Retail or wholesale     |
| 7           | PGR Media   | Jane Deery, CEO                               | Boston                | Advertising             |
| 8           | Mount Auburn Hospital   | Jeanette G. Clough, president and CEO         | Cambridge             | Health care             |
| 9           | New England Baptist Hospital  | Trish Hannon, president and CEO               | Boston                | Health care             |
| 10          | Atlas Travel & Technology Group   | Elaine Osgood, CEO                            | Milford               | Travel services         |
| 11          | Abt Associates  | Kathleen L. Flanagan, president and CEO       | Cambridge             | Research and consulting |
| 12          | Lynn Community Health Center  | Lori Abrams Berry, CEO                        | Lynn                  | Health care             |
| 13          | Hebrew SeniorLife Health Care Services and Hebrew Rehabilitation Center | Mary K. Moscato, president                    | Boston                | Health care             |
| 14          | Vistaprint  | Trynka Shineman, president                    | Waltham               | E-commerce              |
| 15          | The Greater Boston Food Bank  | Catherine D'Amato, president and CEO          | Boston                | Human services          |
| 16          | WilmerHale  | Susan Murley, co-managing partner             | Boston and Washington | Law                     |
| 17          | Beacon Communities  | Pamela Goodman, CEO                           | Boston                | Real estate             |
| 18          | Analysis Group  | Martha S. Samuelson, president and CEO        | Boston                | Consulting              |
| 19          | Worcester Polytechnic   | Laurie Leshin, president                      | Worcester             | Education               |

|    | Institute                                  |  |            |   |
|----|--|--|------------|---|
| 20 | Boston Heart Diagnostics                   | Susan Hertzberg, president and CEO                 | Framingham | Health care                                   |
| 21 | Fidelity Investments                       | Abigail Johnson, president and CEO                 | Boston     | Financial services                            |
| 22 | Princess House                             | Connie Tang, president and CEO                     | Taunton    | Direct selling                                |
| 23 | Partners Community Physicians Organization | Lynn Malloy Stofer, president                      | Needham    | Health care                                   |
| 24 | Harvard University                         | Drew Gilpin Faust, president                       | Cambridge  | Education                                     |
| 25 | Copyright Clearance Center                 | Tracey Armstrong, president and CEO                | Danvers    | Copyright licensing                           |
| 26 | May Institute                              | Lauren C. Solotar, president and CEO               | Randolph   | Human services                                |
| 27 | Au Bon Pain                                | Sue Morelli, president and CEO                     | Boston     | Food or hospitality                           |
| 28 | RFX Forward                                | Caitlin Welby, CEO and president                   | Avon       | Transportation, trucking, and logistics       |
| 29 | Care.com                                   | Sheila Lirio Marcelo, founder, chairwoman, and CEO | Waltham    | Consumer Internet                             |
| 30 | Ascentria Care Alliance                    | Angela Bovill, president and CEO                   | Worcester  | Human services                                |
| 31 | Simmons College                            | Helen Drinan, president                            | Boston     | Education                                     |
| 32 | Candlewick Press                           | Karen Lotz, president and publisher                | Somerville | Publishing                                    |
| 33 | MassDevelopment                            | Marty Jones, president and CEO                     | Boston     | Finance and development                       |
| 34 | Toward Independent Living and Learning     | Dafna Krouk-Gordon, founder and president          | Dedham     | Human services                                |
| 35 | Windham Professionals                      | Christine Timmins Barry, president and CEO         | Andover    | Revenue management and customer care services |
| 36 | Salem State University                     | Patricia Maguire Meservey, president               | Salem      | Education                                     |
| 37 | Infinity Pharmaceuticals                   | Adelene Perkins, president and CEO                 | Cambridge  | Biotechnology                                 |
| 38 | Catholic Charities, Archdiocese of Boston  | Deborah Kincade Rambo, president                   | Boston     | Human services                                |
| 39 | Codman Square Health                       | Sandra Cotterell, CEO                              | Dorchester | Health care                                   |

## Center

|    |  |   |           |   |
|----|--|---|-----------|---|
| 40 | Norwell Visiting Nurse Association                 | Meg Doherty, CEO                                  | Norwell   | Health care                                   |
| 41 | Creative Office Pavilion                           | Denise Horn, principal and president              | Boston    | Office furniture                              |
| 42 | The Advocator Group                                | Julie Turpin, CEO                                 | Wakefield | Social Security disability insurance advocacy |
| 43 | The Dimock Center                                  | Myechia Minter-Jordan, president and CEO          | Roxbury   | Health care                                   |
| 44 | Bentley University                                 | Gloria Cordes Larson, president                   | Waltham   | Education                                     |
| 45 | The Cambridge Institute of International Education | Christine Lin, cofounder and president            | Waltham   | Education                                     |
| 46 | The Cape Cod Five Cents Savings Bank               | Dorothy A. Savarese, chairman, president, and CEO | Orleans   | Financial services                            |
| 47 | D'Youville Life & Wellness Community               | Naomi Prendergast, president and CEO              | Lowell    | Health care                                   |
| 48 | TD Garden  | Amy Latimer, president                            | Boston    | Sports and entertainment arena                |
| 49 | Motion Recruitment Partners                        | Beth Gilfeather, CEO                              | Boston    | Staffing                                      |
| 50 | Wineland-Thomson Adventures                        | Judi Wineland, founder and president              | Watertown | Travel services                               |
| 51 | Carleton-Willard Village                           | Barbara A. Doyle, president and CEO               | Bedford   | Health care                                   |
| 52 | Audley Travel                                      | Jacqui Lewis, president and managing director     | Boston    | Travel services                               |
| 53 | Data Intensity                                     | Kirk Arnold, CEO                                  | Bedford   | IT services or technology                     |
| 54 | Eastern Insurance Group                            | Hope A. Aldrich, president and CEO                | Natick    | Insurance                                     |
| 55 | Axcelis Technologies                               | Mary G. Puma, president and CEO                   | Beverly   | IT services or technology                     |
| 56 | Whittier Street Health Center                      | Frederica M. Williams, president and CEO          | Boston    | Health care                                   |
| 57 | Jewish Family & Children's Service                 | Rimma Zelfand, CEO                                | Waltham   | Human services                                |

|    |  |  |                    |  |
|----|--|--|--------------------|--|
| 58 | Travel Leaders Framingham              | Diane Mullahy, president   | Framingham         | Travel services                                |
| 59 | Morgan Memorial Goodwill Industries    | Joanne K. Hilferty, president and CEO  | Boston             | Human services                                 |
| 60 | YouthBuild USA                         | Dorothy Stoneman, founder and CEO  | Somerville         | Nonprofit, national intermediary               |
| 61 | Avedis Zildjian Co.                    | Craigie Zildjian, CEO and owner  | Norwell            | Manufacturing                                  |
| 62 | Akcea Therapeutics                     | Paula Soteropoulos, president and CEO  | Cambridge          | Biotechnology                                  |
| 63 | The Grommet                            | Jules Pieri, cofounder and CEO, and Joanne Domeniconi, cofounder and chief discovery officer | Somerville         | Product launch platform                        |
| 64 | The Trustees of Reservations           | Barbara Erickson, president and CEO  | Boston             | Nonprofit                                      |
| 65 | Elaine Construction Co.                | Lisa B. Wexler, president  | Newton Upper Falls | Construction                                   |
| 66 | Yaskawa - Solectria Solar              | Anita Worden, cofounder and co-CEO   | Lawrence           | Manufacturing/renewables                       |
| 67 | Globalization Partners                 | Nicole Sahin, CEO  | Cambridge          | Global business services                       |
| 68 | Massachusetts Technology Collaborative | Pamela Goldberg, CEO   | Westborough        | Government/technology innovation               |
| 69 | New England Aquarium                   | Nigella Hillgarth, president and CEO   | Boston             | Cultural institution/conservation organization |
| 70 | Vecna                                  | Deborah Theobald, CEO  | Cambridge          | Health care                                    |
| 71 | Newburyport Five Cents Savings Bank    | Janice Morse, president and CEO  | Newburyport        | Financial services                             |
| 72 | Shepley Bulfinch                       | Carole Wedge, president  | Boston             | Architecture                                   |
| 73 | Cambridge BioMarketing                 | Maureen N. Franco, CEO   | Cambridge          | Advertising                                    |
| 74 | Gradient                               | Teresa S. Bowers, president  | Cambridge          | Consulting                                     |
| 75 | Lancaster Packaging                    | Marianne Lancaster, president  | Hudson             | Purchasing services and wholesale distribution |
| 76 | Boston Community Capital               | Elyse Cherry, CEO and president  | Boston             | Community development finance                  |

|    |                                 |   |                 |                                |
|----|---------------------------------|---|-----------------|--------------------------------|
| 77 | IntePros Consulting             | Loren Kovalcik, CEO and president           | Lexington       | Staffing                       |
| 78 | The Children's Trust            | Suzin Bartley, executive director           | Boston          | Human services                 |
| 79 | Finagle a Bagel                 | Laura B. Trust, owner and president         | Newton          | Retail or wholesale            |
| 80 | Onyx Specialty Papers           | Patricia Begrowicz, president and co-owner  | South Lee       | Manufacturing                  |
| 81 | United Personnel Services       | Tricia Canavan, president                   | Springfield     | Staffing                       |
| 82 | Magellan Diagnostics            | Amy Winslow, president and CEO              | North Billerica | Health care                    |
| 83 | E. T. & L. Corp.                | Jennie Lee Colosi, president                | Stow            | Construction                   |
| 84 | P3I                             | Janice P. Guy, president and CEO            | Hopkinton       | Engineering                    |
| 85 | Learning Express                | Sharon DiMinico, CEO                        | Devens          | Retail or wholesale            |
| 86 | Isabella Stewart Gardner Museum | Anne Hawley, Norma Jean Calderwood director | Boston          | Museum                         |
| 87 | KNF&T Staffing Resources        | Elizabeth A. Tucker, president and CEO      | Boston          | Staffing                       |
| 88 | Radius Financial Group          | Sarah Valentini, cofounder and principal    | Norwell         | Financial services             |
| 89 | KHJ Brand Activation            | Judy Habib, CEO and president               | Boston          | Branding/marketing             |
| 90 | P.J. Spillane Co.               | Sarah Spillane, CEO and president           | Everett         | Construction                   |
| 91 | Hollister Staffing              | Kip Hollister, founder and CEO              | Boston          | Staffing                       |
| 92 | Chadwick Martin Bailey          | Anne Bailey Berman, president and CEO       | Boston          | Market research and consulting |
| 93 | Reading Cooperative Bank        | Julieann Thurlow, president and CEO         | Reading         | Financial services             |
| 94 | Front Line                      | Nancy Salter, president and owner           | Hopedale        | Construction                   |
| 95 | B&G Restaurant Supply           | Tricia Powers Dambrauskas, owner            | Pittsfield      | Retail or wholesale            |
| 96 | Investor Group Services         | Mindy Berman, managing director             | Boston          | Financial services             |
| 97 | Boston Common Asset Management  | Geeta Aiyer, president and founder          | Boston          | Financial services             |

|     |                               |   |           |                     |
|-----|-------------------------------|---|-----------|---------------------|
| 98  | State Cleaning Service        | Jennifer Lourie, president and CEO      | Needham   | Commercial cleaning |
| 99  | Wellesley Investment Advisors | Darlene Murphy, president and cofounder | Wellesley | Financial services  |
| 100 | Kaplan Construction           | Jane Kaplan Peck, COO                   | Brookline | Construction        |

:

Send comments to [magazine@globe.com](mailto:magazine@globe.com).

SHOW 5 COMMENTS

## Most Popular In Magazine



### **Doctors like me tell you to eat less meat. It's about time you start listening.**

If the benefits of a better diet came in a pill, it would be hailed as a medical miracle.

[MORE...](#)



### **Can we please stop pretending marijuana is harmless?**

The truth is it can be dangerous, especially for young people. [MORE...](#)



### **Cape Cod's big drinking water problem**

When you live on what's essentially a sandbar, pollution, septic systems, and political roadblocks add up to one tough challenge. [MORE...](#)

## **Joanne Chang won't rest until everything is perfect**



Boston's most famous baker is building an empire on flour, sugar, and an unrelenting focus on every last detail. [MORE...](#)

---



## The best kind of neighbor

From the birth of our first child to the college goodbye, he was always there for our family. [MORE...](#)

---



## The college debt crisis is even worse than you think

We tell students they need a bachelor's degree to get ahead. But for too many, the numbers no longer add up. [MORE...](#)

---



## 10 years later, did the Big Dig deliver?

The \$15 billion project is a road paved with failures, successes, and what-ifs. [MORE...](#)

---



## Misadventures in trying to get a shingles vaccine

When being your own health care advocate is an exercise in frustration. [MORE...](#)

---



## Boston's 10 best BBQ joints

We decree which spots serve the tastiest ribs, pulled pork, brisket, and other smoked specialties. [MORE...](#)

---



## The untold story of Boston's iconic Citgo sign

Meet the man who designed one of the city's most-recognizable landmarks. [MORE...](#)

---

## Boston's 50 best new restaurants

Whether you're in the mood for a neighborhood joint or a celebrity chef's newest showpiece, these





eateries are sure to delight. [MORE...](#)

---



## Fewer and fewer Americans vote with religion in mind

Why candidates should start paying attention to the atheists, agnostics, and other “nones.” [MORE...](#)

---



## 10 vintage railroad rides in New England

Climb aboard for a unique way to soak in the fall foliage. [MORE...](#)

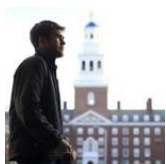
---



## Where did ISIS come from? The story starts here.

It took us five years to talk honestly about Vietnam. It's time to do that with Iraq, and Paul Bremer's tenure is the place to begin. [MORE...](#)

---



## What is it like to be poor at an Ivy League school?

High-achieving, low-income students, often the first in their families to attend college, struggle to feel they belong on elite campuses. [MORE...](#)

---



## I like my mom's advice, even though I pretend not to need it

The message she sends is comforting: I'm here for you, no matter what. [MORE...](#)

---



## Where to eat and what to order in Boston's Chinatown

These 13 restaurants get it right, from sublime dumplings to classic, crispy duck. [MORE...](#)

---



## Mayor Walsh on how he's working to make Boston better for artists

“If Boston is going to be a thriving, healthy, and innovative city, we need our artists to flourish,” he writes. [MORE...](#)

---

## Top 10 Trending Articles

---

Most Viewed

Most Commented

Most Shared

---

A hockey pro dies, and the coach he said raped him is free

---

Cruise ships elicit fear of paradise lost in Bar Harbor

---

NFL season offers a lot to look forward to

---

Giancarlo Stanton is just what the Red Sox need

---

Religion is constant part of Elizabeth Warren's life

---

How do you like the Red Sox' chances come October?

---

Gary Washburn: Kyrie Irving is confident in his decision and himself

---

Patriots trade quarterback Jacoby Brissett to Colts

---

Brandon Bolden, D.J. Foster among Patriots' cuts

---

North Korea says it's conducted a nuclear test

---

**Real journalists. Real journalism. [Subscribe to The Boston Globe today.](#)**

### Subscribe Now

[Digital Access](#)

[Home Delivery](#)

### My Account

[Log in](#)

[Manage my Account](#)

[Mobile Customer Service](#)

### Contact

[Help](#)

[FAQs](#)

[Globe newsroom](#)

[Advertise](#)

[Order Back Issues](#)

### Social

[Facebook](#)

[Twitter](#)

[Google+](#)

### More

[ePaper](#)

[News in Education](#)

[Archives](#)

[Privacy policy](#)

[Terms of service](#)

[Terms of purchase](#)

[Your Ad Choices](#)

One free article left. **Subscribe now** →